

Cor en Mi

Lento.

Cor en Mi

p

Allegro spiritoso.

f *p*

f *p*

Lento.

f

Allegro spiritoso. *p*

f *mf*

p

f

Sempre forte

p

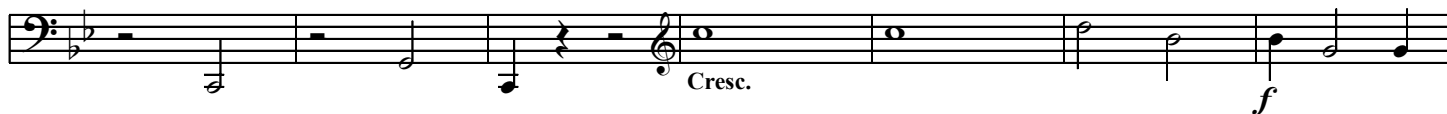
16

4

This musical score for 'Cor en Mi' is written for a single melodic line in treble clef. The key signature consists of two sharps (F# and C#). The piece begins with a 'Lento.' tempo marking and a dynamic of *p* (piano). It transitions to 'Allegro spiritoso.' with dynamics of *f* (forte) and *p*. A second 'Lento.' section follows, marked with *f*. The tempo returns to 'Allegro spiritoso.' with a *p* dynamic, and a 'Solo' section is indicated. Dynamics of *f* and *mf* are used here. The piece then moves to a 'Sempre forte' section. The final part of the score includes two measures marked with repeat signs and the numbers 16 and 4, likely indicating the number of measures to be repeated.

[illegible]

203



210



217



224



232



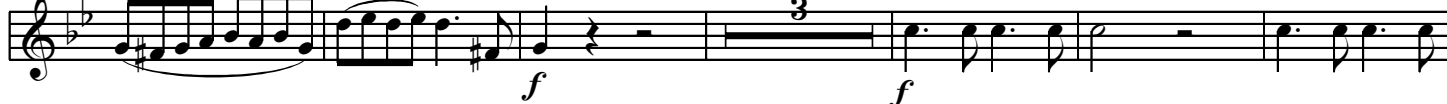
239



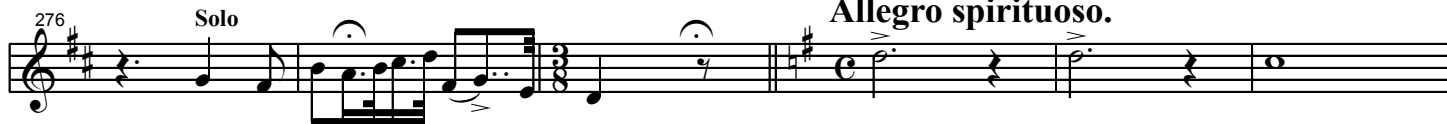
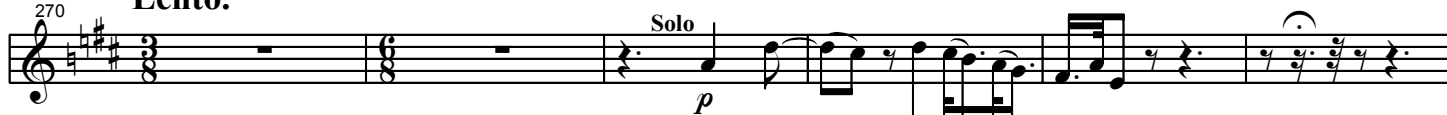
248



254



263

**Lento.**

282



289



296

303

310

317

324

331

348

355

362

371

377

382

388

p

Cresc.

f

f

sf

sf

p

f

sf

sf

Fine